

**CARL ALBERT STATE COLLEGE
INSTITUTIONAL SNAPSHOT
FALL 2010 and FALL 2011**

Student Demography Headcounts

Undergraduate Enrollments by Class Levels

Fall 2010

2,666 Total Headcount

1,826 Sophomores

819 Freshman

21 Special (non-degree seeking and/or concurrent enrollment)

Fall 2011

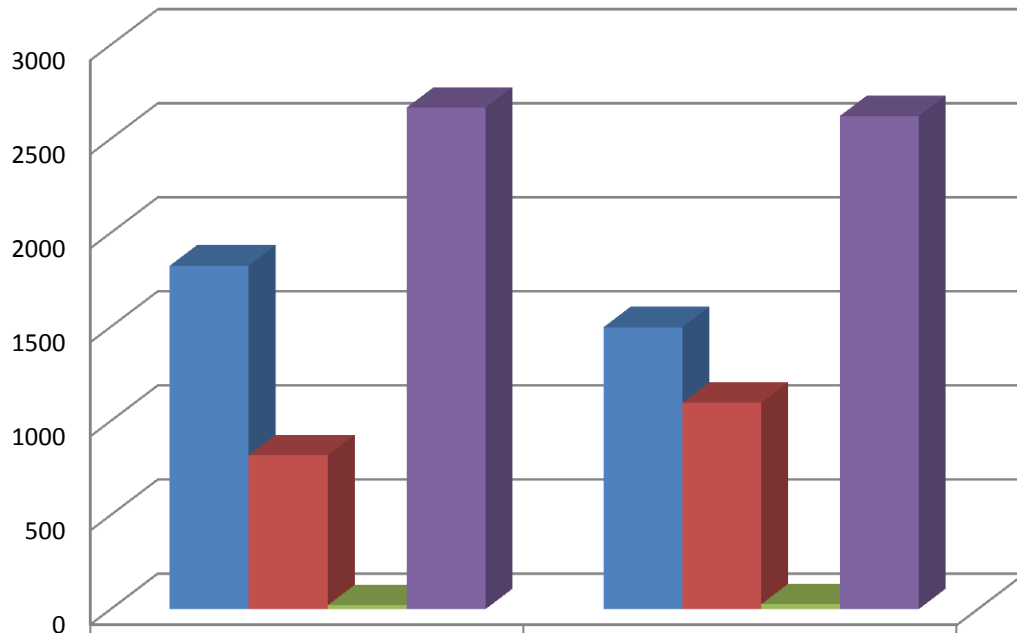
2,622 Total Headcount

1,499 Sophomores

1,097 Freshman

26 Special (non-degree seeking and/or concurrent enrollment)

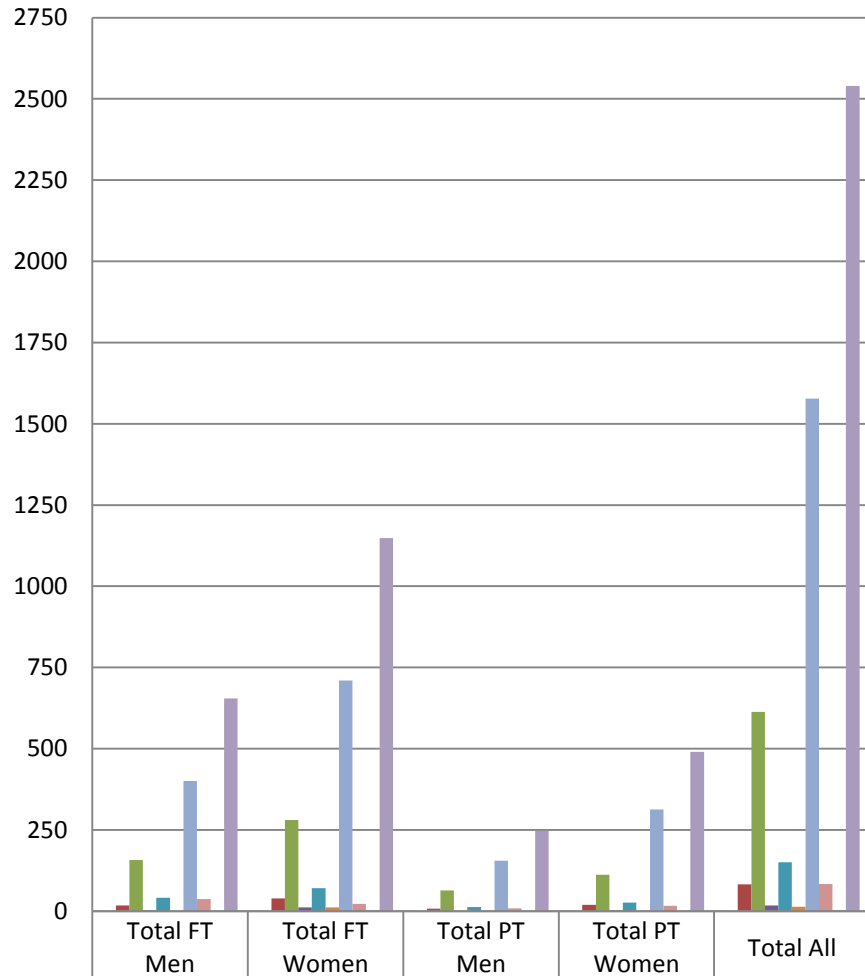
Undergraduate Enrollments by Class Level



	Admitted Fall 2010	Admitted Fall 2011
■ Sophomore	1826	1499
■ Freshman	819	1097
■ Special	21	26
■ Total	2666	2622

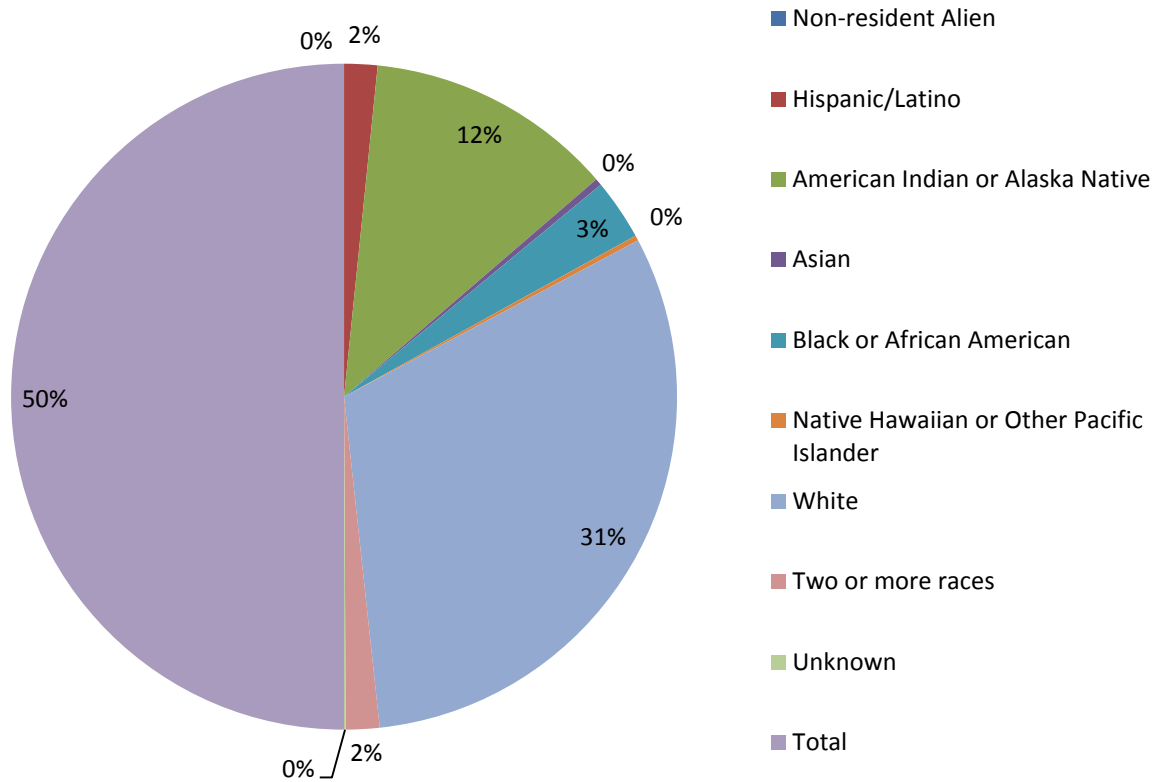
Undergraduate Students by Degree Seeking & Non-Degree Seeking Status

Fall 2010 Student Demographic Headcount

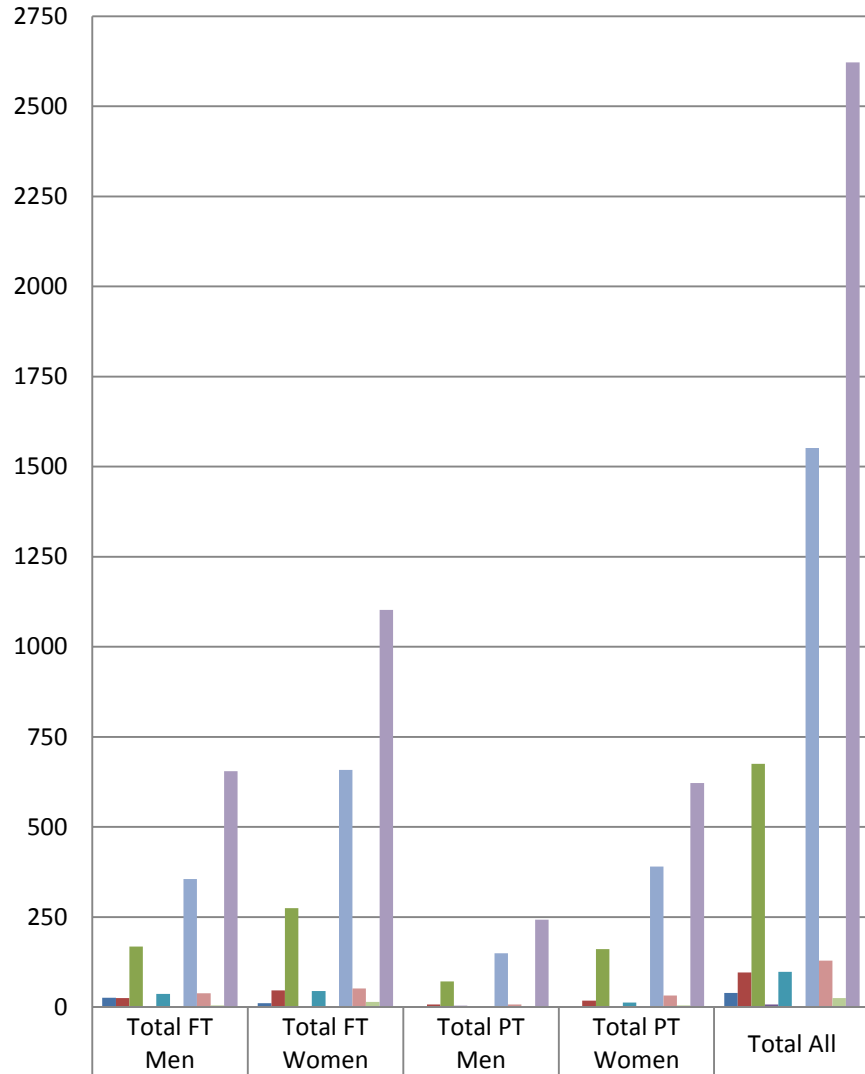


	Total FT Men	Total FT Women	Total PT Men	Total PT Women	Total All
■ Non-resident Alien	0	0	0	0	0
■ Hispanic/Latino	17	39	7	19	82
■ American Indian or Alaska Native	157	280	64	112	613
■ Asian	3	11	0	3	17
■ Black or African American	41	71	12	26	150
■ Native Hawaiian or Other Pacific Islander	0	11	1	1	13
■ White	400	710	155	313	1578
■ Two or more races	37	22	8	16	83
■ Unknown	0	4	0	0	4
■ Total	655	1148	247	490	2540

Fall 2010 Student Demographics by Race/Ethnicity

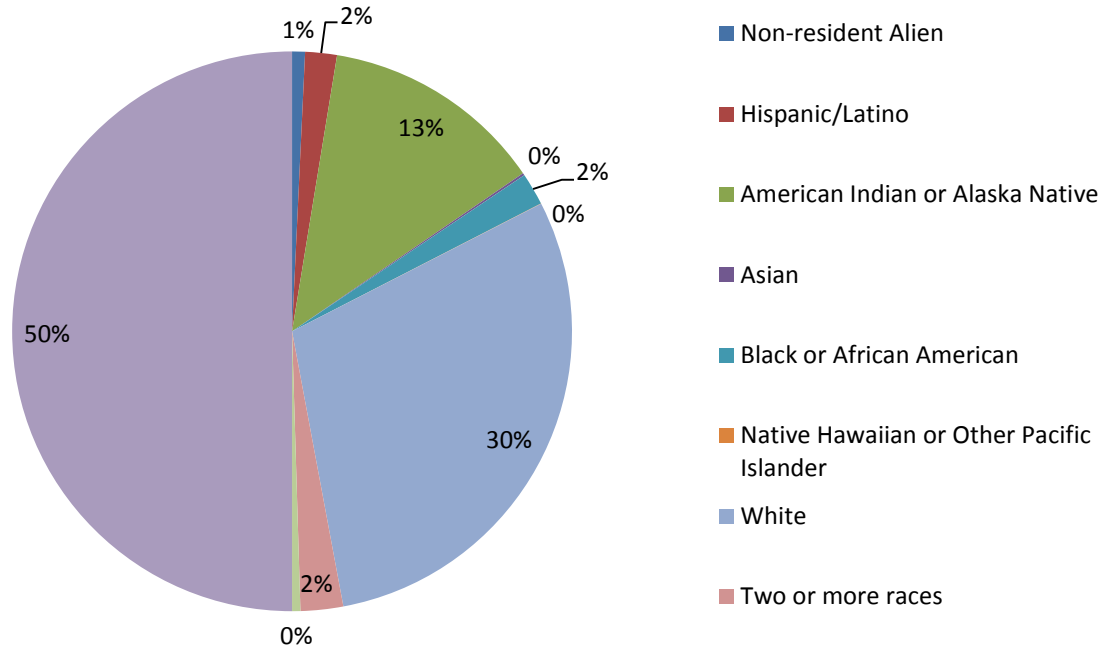


Fall 2011 Student Demographic Headcount



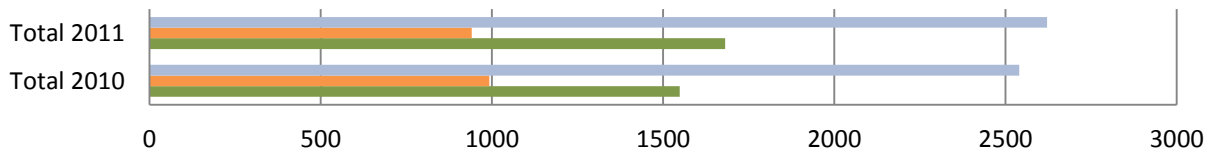
	Total FT Men	Total FT Women	Total PT Men	Total PT Women	Total All
■ Non-resident Alien	26	11	1	1	39
■ Hispanic/Latino	25	46	7	18	96
■ American Indian or Alaska Native	168	275	71	161	675
■ Asian	1	1	4	1	7
■ Black or African American	37	45	3	13	98
■ Native Hawaiian or Other Pacific Islander	0	0	0	1	1
■ White	355	658	149	390	1552
■ Two or more races	38	52	7	32	129
■ Unknown	5	14	1	5	25
■ Total	655	1102	243	622	2622

Fall 2011 Student Demographics by Race/Ethnicity



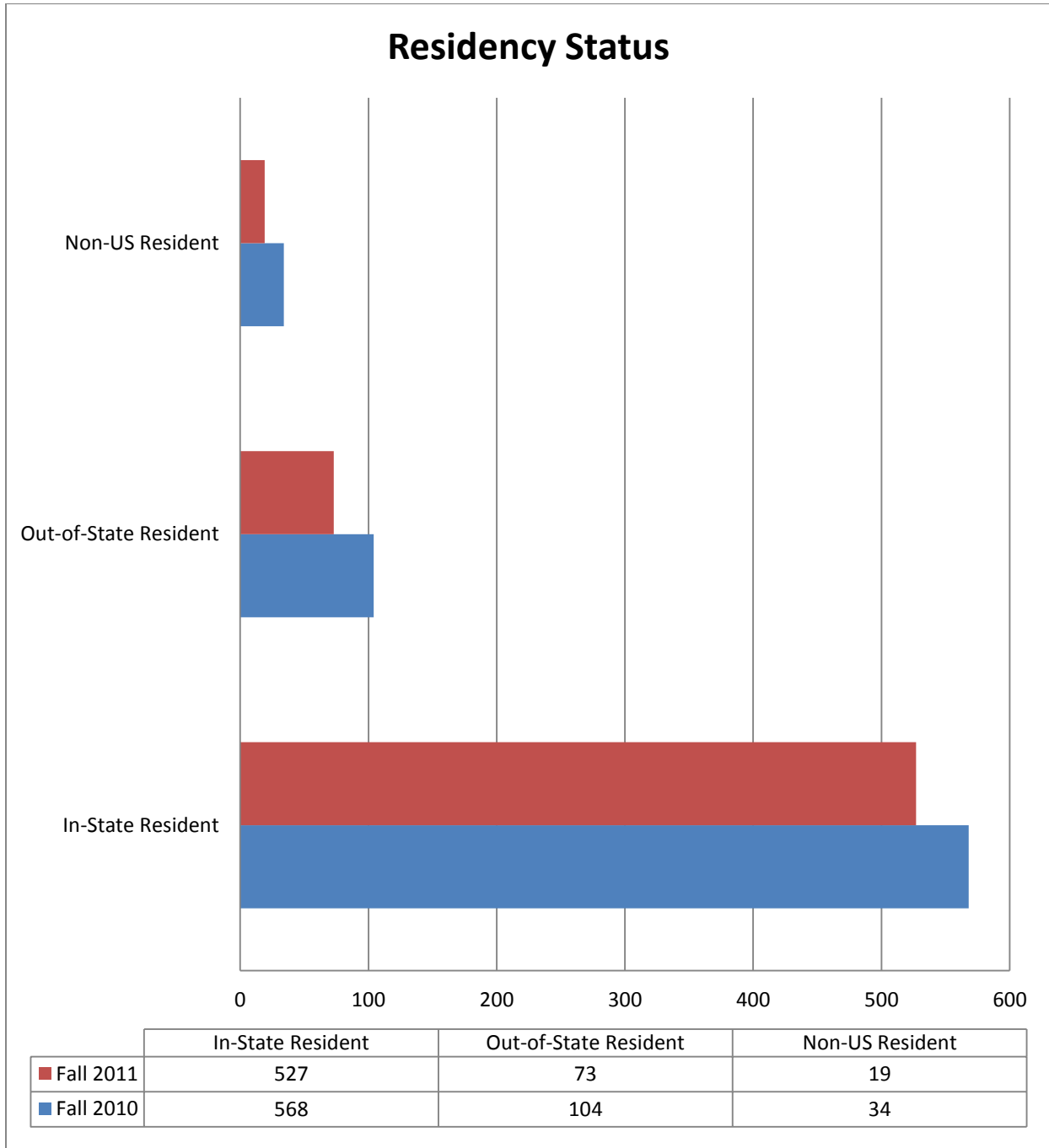
Age Range of Undergraduate Students (24 and under; 25 and older)

Age Range of Undergraduate Students



	Total 2010	Total 2011
■ Total	2540	2622
■ Ages ≥25	992	941
■ Ages ≤24	1548	1681

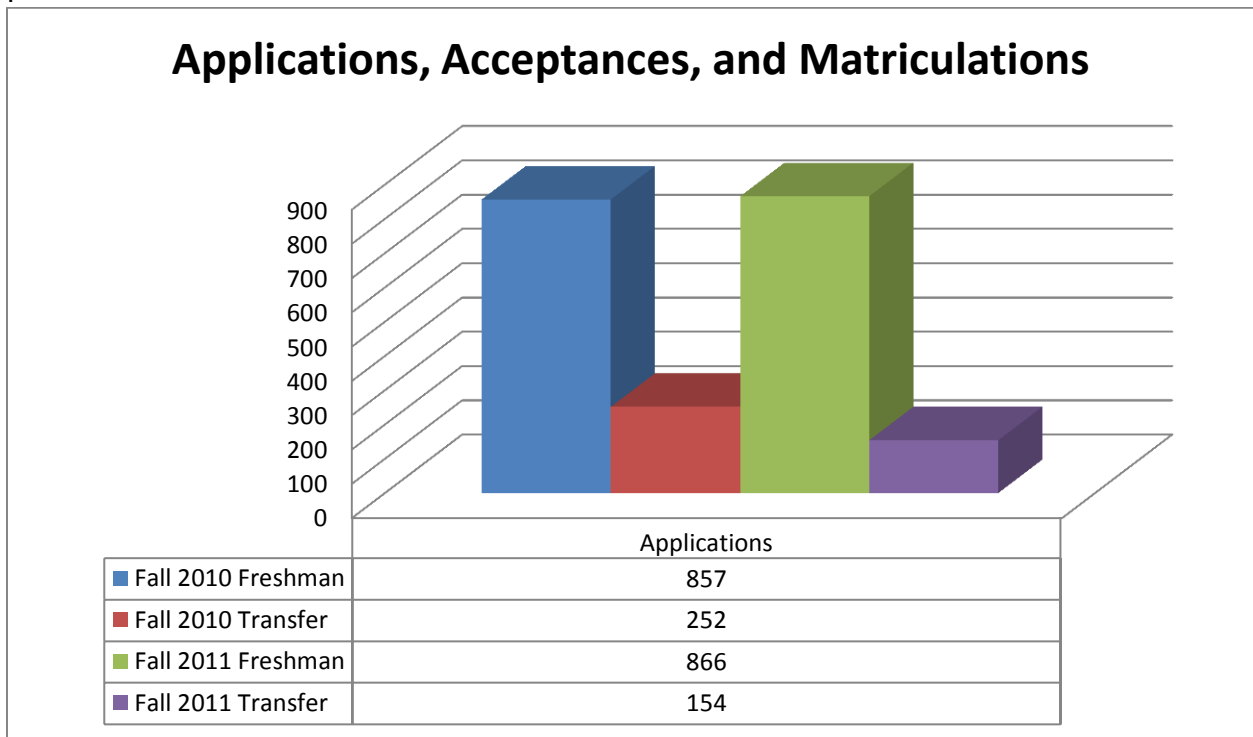
Numbers of Students by Residency Status of Credit-seeking Students Who Come to a Campus or Site for Instruction



Student Recruitment and Admissions

Applications, Acceptances, and Matriculations

Freshman: CASC is an open door institution and accept all applicants.
Undergraduate Transfers: CASC is an open door institution and accepts all applicants.

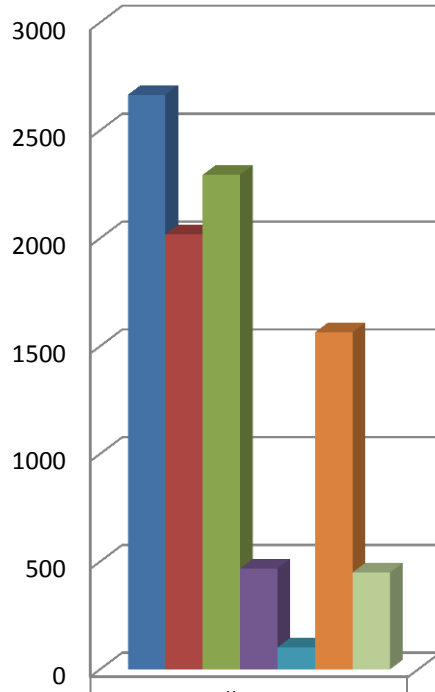


Required Admission Test(s) And Mean Score of Students Accepted

ACT and Compass tests are used for evaluation and placement. An ACT sub-score of 19 in each area is required for entrance into college level courses. Compass scores are evaluated in the same manner; minimum 75 English, 81 Reading, 47 Algebra for entrance into college level courses.

Financial Assistance for Students

Fall 2010 Financial Aid for Enrolled Students



■ Enrolled	2666
■ Applied for Aid	2019
■ Received Aid	2295
■ Loans	469
■ Work Study	103
■ Scholarships/Grants	1565
■ Academic Scholarships	450

Percentages of students applying for any type of financial assistance

Fall 2010 = 76% (2019)
 Fall 2011 = 75% (1964)

Headcount of students receiving any type of financial assistance

Fall 2010 = 2295 (this number includes other scholarships received by students without application – i.e., community based scholarships)
 Fall 2011 = 2267

Percentage of total enrollment

Fall 2010 = 86%
 Fall 2011 = 86%

Percentages of Total Enrollment Receiving Assistance

Fall 2010:

Loans = 469 Students = 18%

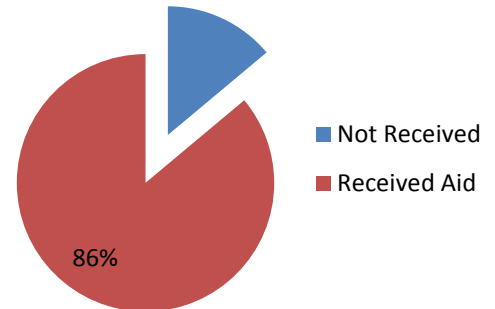
Work Study = 103 Students = 4%

Scholarships/Grants = 1565 = 59%

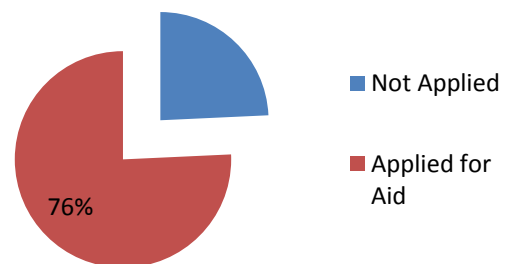
Academic Based/Merit Based

Scholarships = 450 = 17%

Fall 2010 Percentage of Enrolled Students Receiving Aid



Fall 2010 Percentage of Enrolled Students Applied for Aid



Fall 2011:

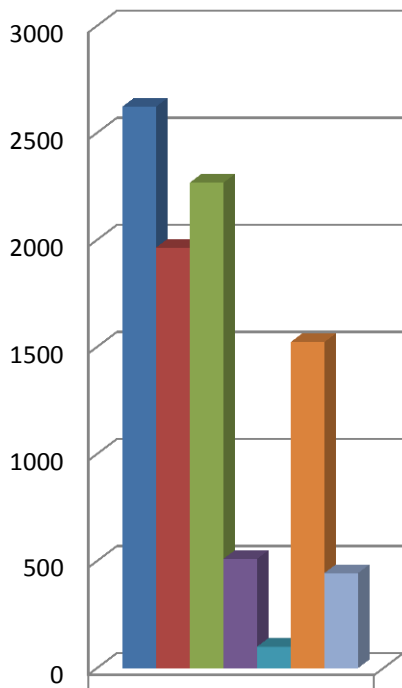
Loans = 469 Students = 18%

Work Study = 100 = 4%

Scholarships/Grants = 1523 = 58%

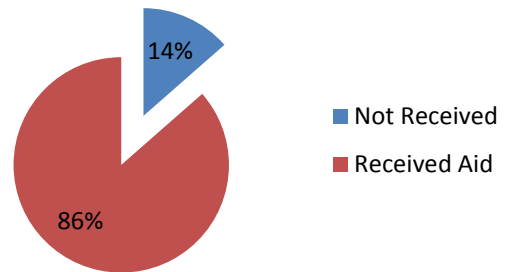
Academic Based/Merit Based Scholarships = 444 = 17%

**Fall 2011 Financial Aid
for Enrolled Students**

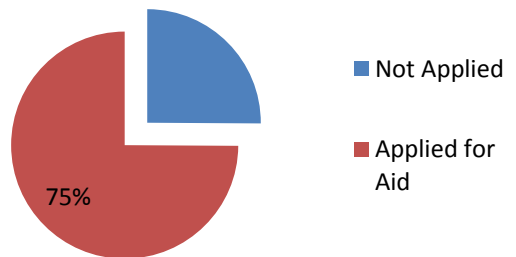


Fall 2011	
■ Enrolled	2622
■ Applied for Aid	1964
■ Received Aid	2267
■ Loans	510
■ Work Study	100
■ Scholarships/Grants	1523
■ Academic Scholarships	444

**Fall 2011 Percentage
of Enrolled Students
Applied for Aid**



**Fall 2011 Percentage
of Enrolled Students
Applied for Aid**



Tuition Discount Rate (TDR) for Undergraduate Student Populations

TDR = total institutional financial aid dollars as a proportion of income that would result from all students paying full tuition.

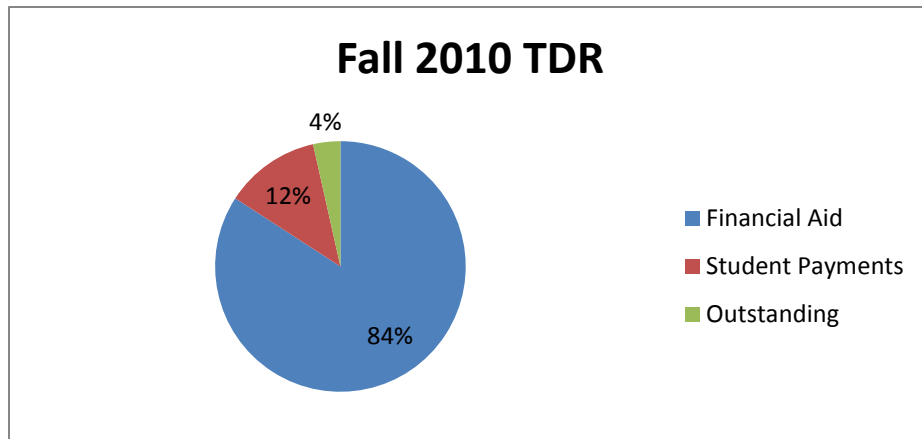
I = Institutional Financial Aid Dollars
Awarded for Tuition

P = Payments of Tuition Expected
of Students and their External Aid

$TDR = I / (I + P)$ as a percentage

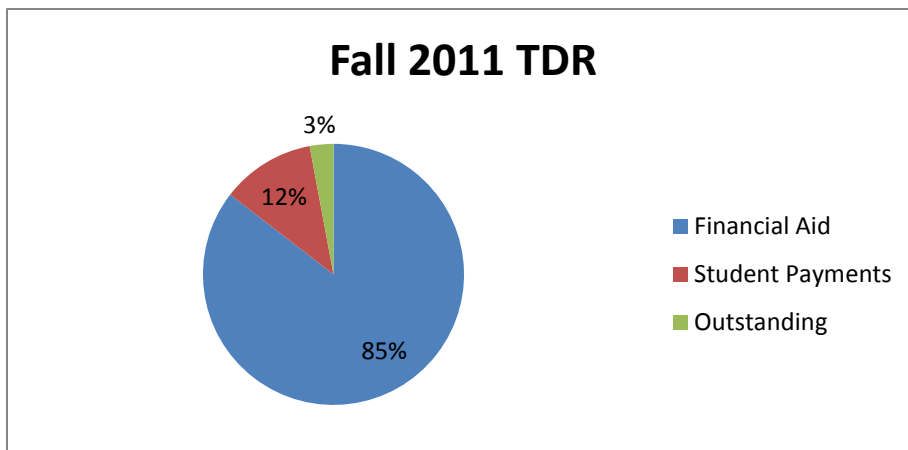
Fall 2010 Financial Aid = 84.14%

Fin Aid	\$1,651,687
Student payments	242,289
Outstanding (student will pay)	<u>68,838</u>
Total	<u>\$1,962,814</u>



Fall 2011 Financial Aid = 85.46%

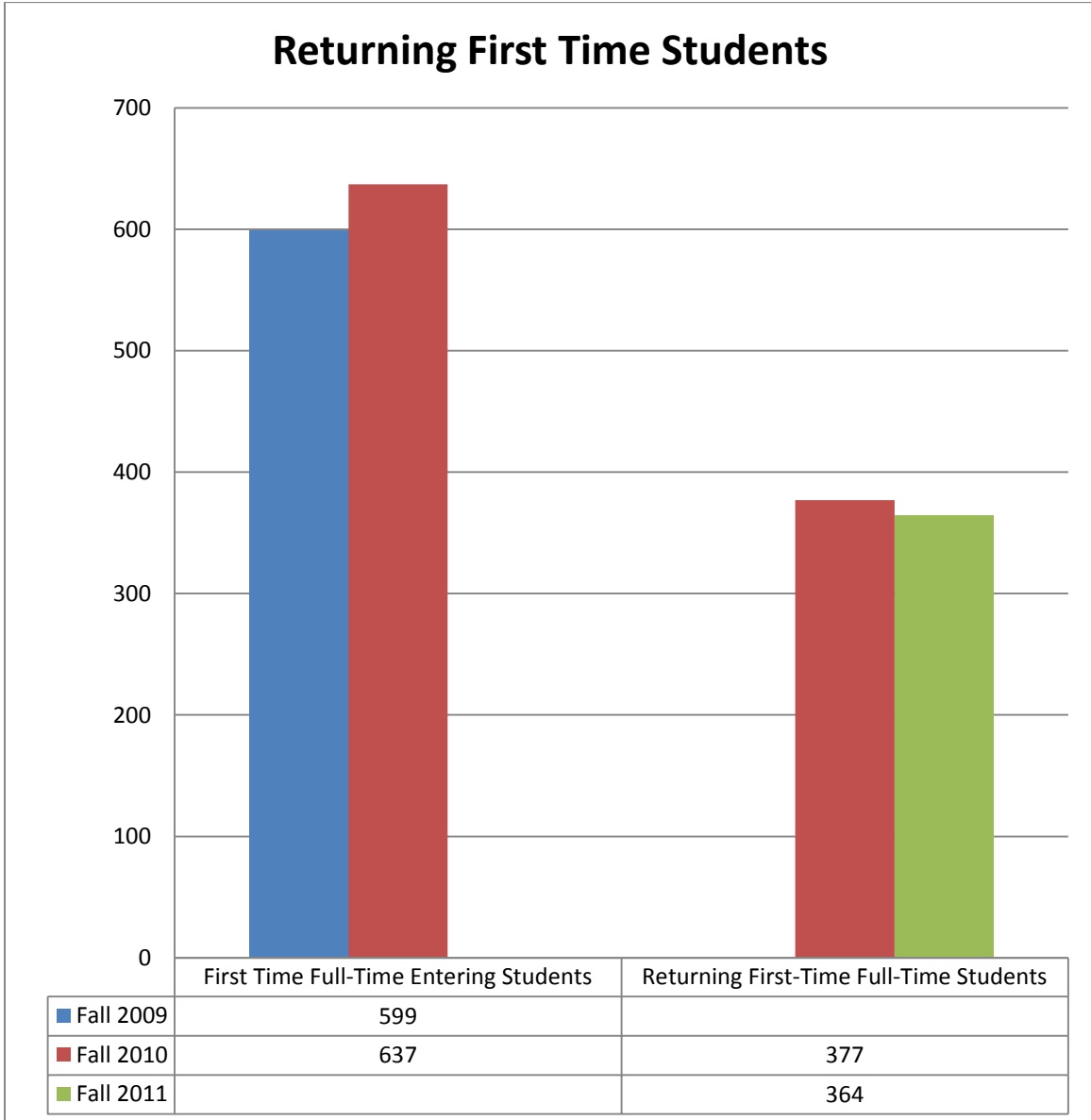
Fin Aid	\$1,689,062
Student payments	229,277
Outstanding (student will pay)	<u>57,932</u>
Total	<u>\$1,976,271</u>



Student Retention and Program Productivity

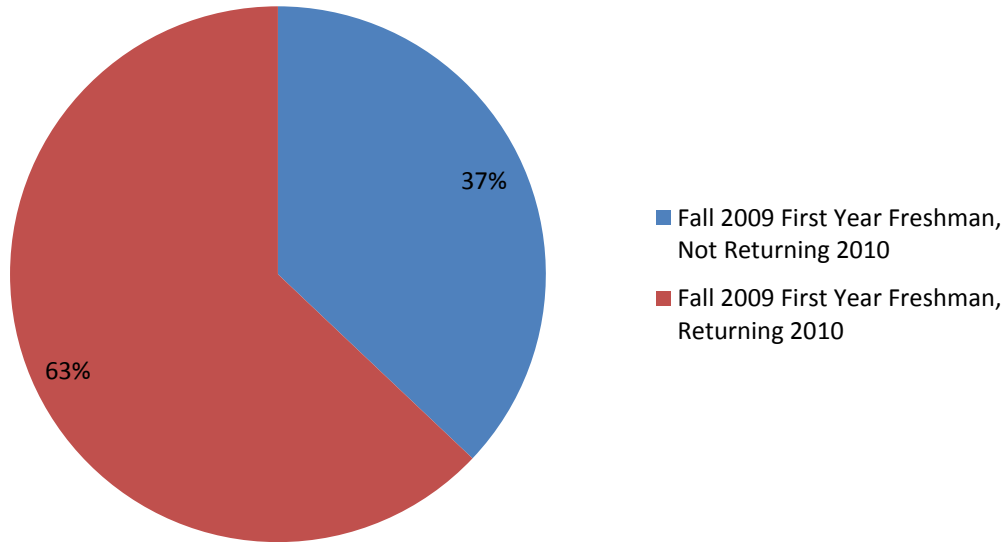
Percentage of Returning First-time, Full-time fall Entering Students

Number Entering (NE): Fall 2009 = 599; Fall 2010 = 377
 Number Returning (NR): Fall 2010 = 637; Fall 2011 = 364
 NR/NE as percentage: Fall 2010 = 63%; Fall 2011 = 57%

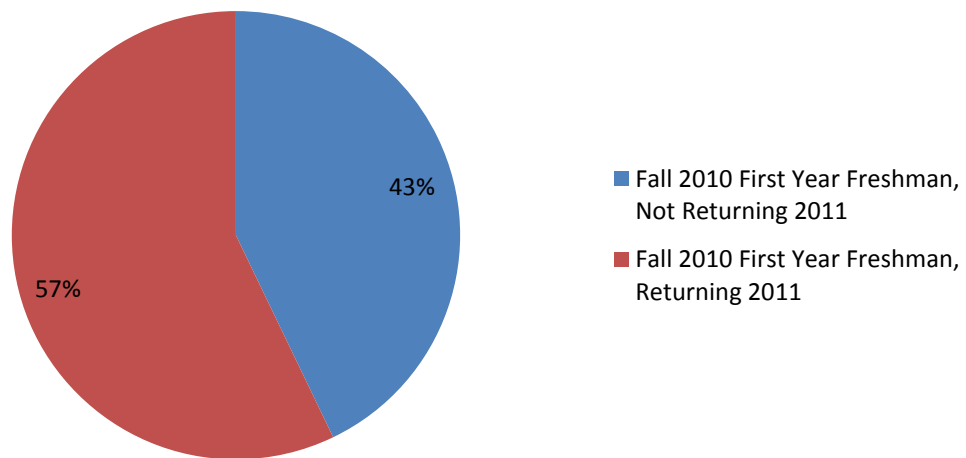


Percentage of Returning First-time, Full-time Fall Entering Students

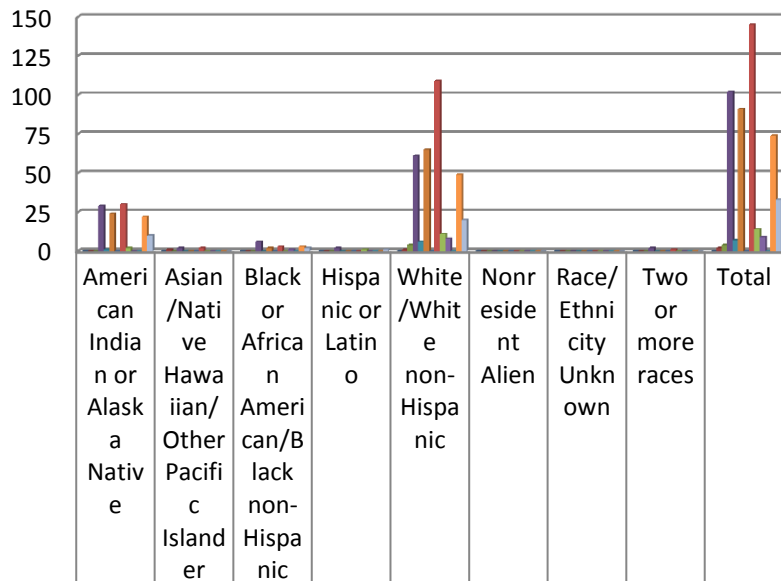
Fall 2010 Returning 2009 Freshman



Fall 2011 Returning 2010 Freshman



2011 Graduates by Ethnicity and CIP Codes



■ Agriculture/Natural Resources (1, 3)	0	0	0	0	0	0	0	0	0
■ Architecture/Engineering/Engineering Technology (4, 14, 15)	0	1	0	0	1	0	0	0	2
■ Biological & Physical Science (26, 40, 41)	0	0	0	0	4	0	0	0	4
■ Business (52)	29	2	6	2	61	0	0	2	102
■ Communications/Communication Technology/Fine Arts (9, 10, 50)	1	0	0	0	6	0	0	0	7
■ Education/Library Science (13, 21, 25)	24	0	2	0	65	0	0	0	91
■ Humanities/Interdisciplinary (5, 16, 23, 24, 30, 38, 39, 54)	0	0	0	0	0	0	0	0	0
■ Health (51)	30	2	3	0	109	0	0	1	145
■ Law (22)	2	0	0	1	11	0	0	0	14
■ Mathematics/Computer Science (11, 27)	0	0	1	0	8	0	0	0	9
■ Military Technology/Protective Services (29, 43)	0	0	0	0	0	0	0	0	0
■ Personal Services/Consumer Services/Fitness (12, 19, 31)	22	0	3	0	49	0	0	0	74
■ Psychology/Social Sciences & Service (42, 44, 45)	10	0	2	1	20	0	0	0	33

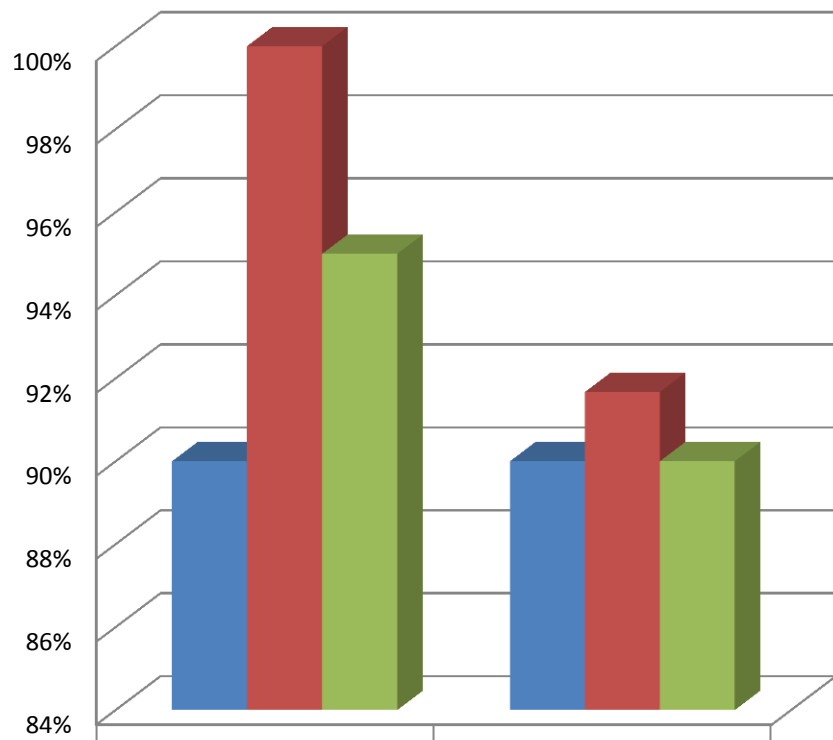
Pass Rates of Undergraduate Students Sitting for Licensure Examinations

RADT – American Registry of Radiologic Technologists (ARRT): 2010 – 90%; 2011 – 90%

PTA – National Physical Therapy Assistant Exam (NPTAE): 2010 – 100%; 2011 – 91.67%

Nursing – National Council of State Boards of Nursing (NCLEX-RN): 2010 – 95%; 2011 – 90%

Licensure Examination Pass Rates



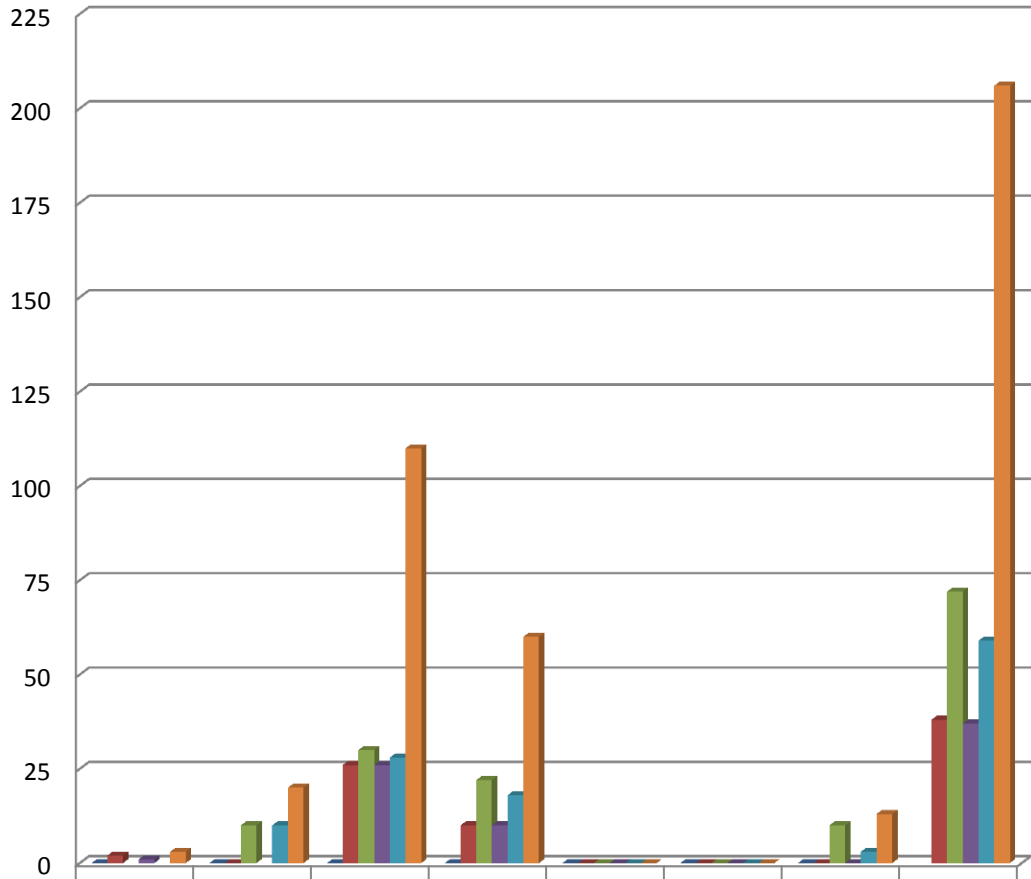
■ RADT - American Registry of Radiologic Technologists (ARRT)	90%	90%
■ PTA - National Physical Therapy Assistant Exam (NPTAE)	100%	92%
■ Nursing - National Council of State Boards of Nursing (NCLEX-RN)	95%	90%

Faculty Demography

Fall 2010/2011 Faculty Headcount by Degree Earned

Degree Level	Full-time 2010	Part-time 2010	Full-Time 2011	Part-Time 2011	Total
Doctorate	2		1		3
First Professional	0	10		10	20
Master's	26	30	26	28	110
Bachelor's	10	22	10	18	60
Associate's	0	0	0	0	0
None	0	0	0	0	0
Unknown	0	10	0	3	13
TOTAL	38	72	37	59	206

Fall 2010/2011 Faculty Headcount by Degree Earned



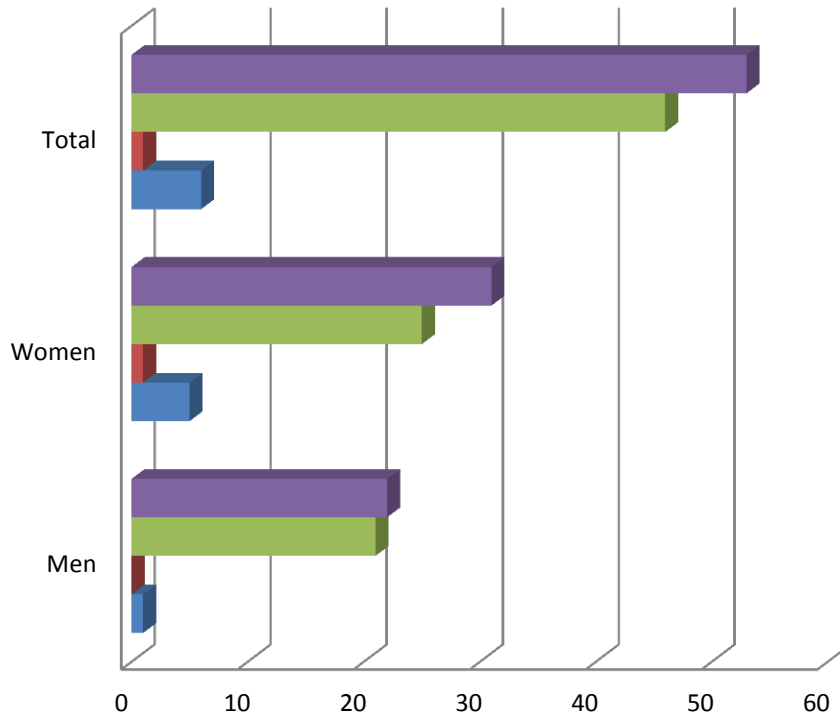
	1	2	3	4	5	6	7	8
■ Degree Level	0	0	0	0	0	0	0	
■ Full-time 2010	2	0	26	10	0	0	0	38
■ Part-time 2010		10	30	22	0	0	10	72
■ Full-Time 2011	1		26	10	0	0	0	37
■ Part-Time 2011		10	28	18	0	0	3	59
■ Total	3	20	110	60	0	0	13	206

Headcount of Faculty According to Race/Ethnicity, Gender, and Rank

Full-Time Faculty Demography Race/Ethnicity

	Men	Women	Total
Am Indian/Alaska Native	1	5	6
Hispanic	0	1	1
White	21	25	46
Full-Time Faculty (TAF included)	22	31	53

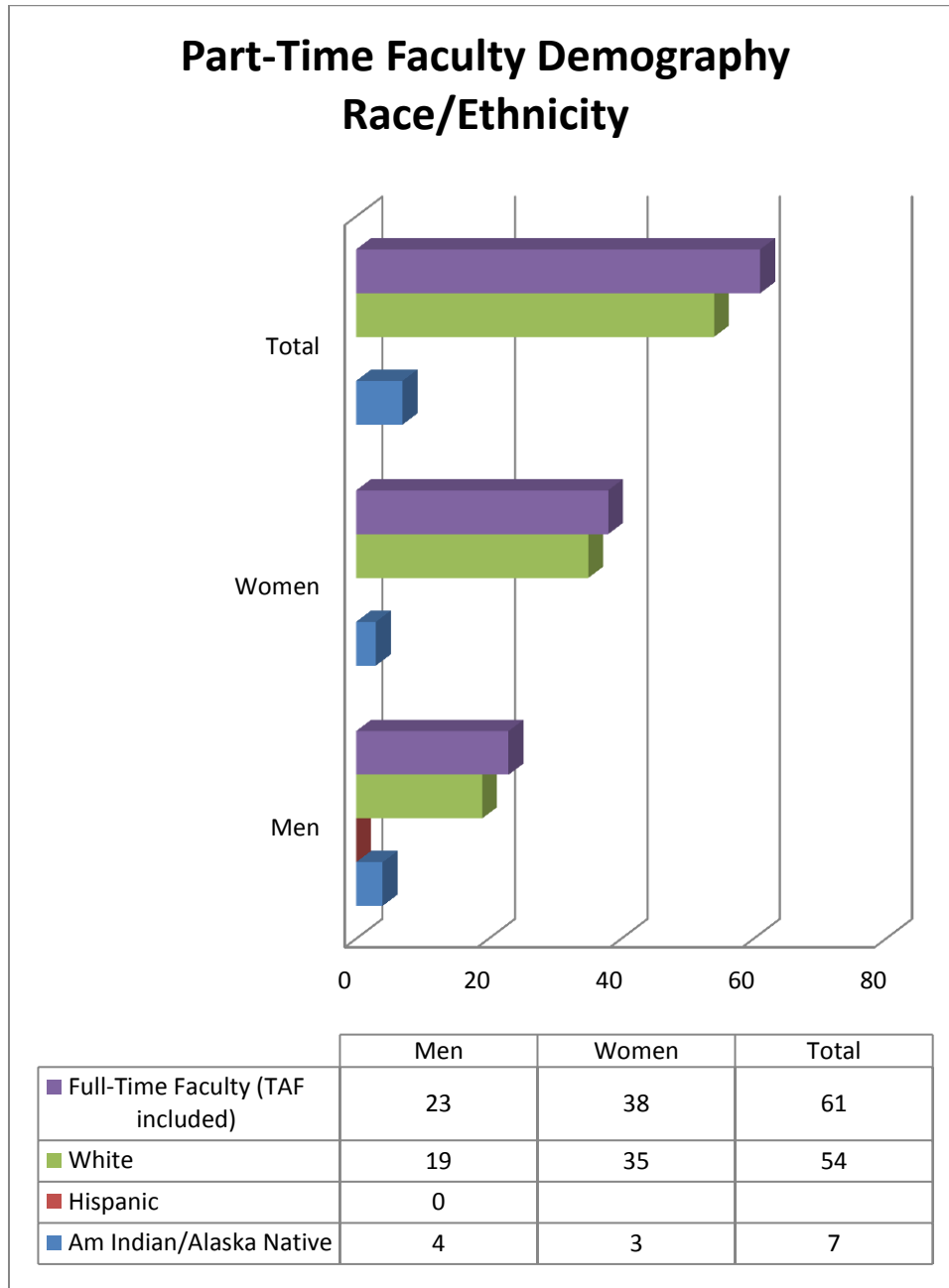
Full-Time Faculty Demography Race/Ethnicity



	Men	Women	Total
Full-Time Faculty (TAF included)	22	31	53
White	21	25	46
Hispanic	0	1	1
Am Indian/Alaska Native	1	5	6

Part-Time Faculty Demography Race/Ethnicity

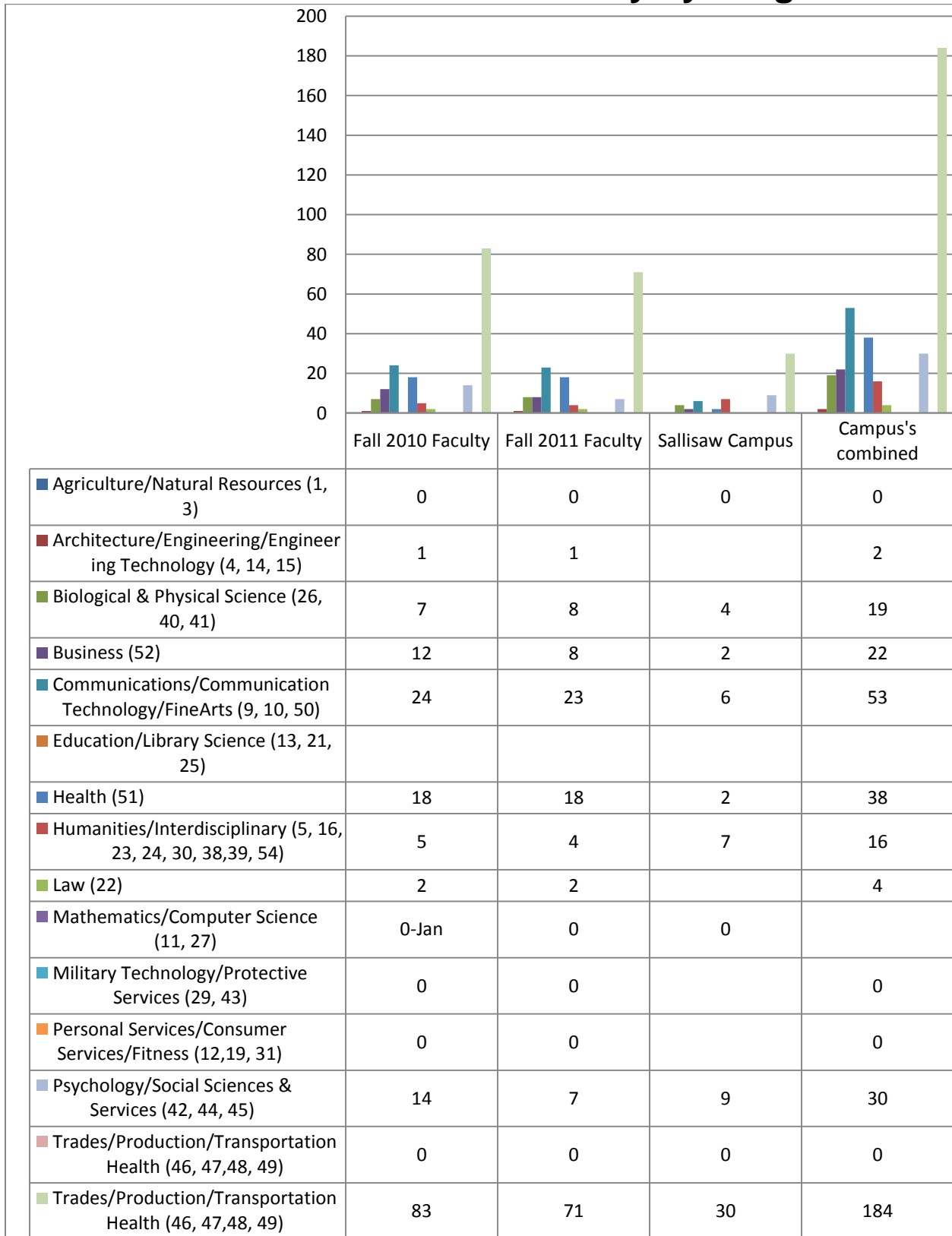
	Men	Women	Total
Am Indian/Alaska Native	4	3	7
Hispanic	0		
White	19	35	54
Full-Time Faculty (TAF included)	23	38	61



Full-Time and Part-Time Faculty by Program

							Fall 2010 Faculty	Fall 2011 Faculty	Sallisaw Campus	Campuses combined
Agriculture/Natural Resources (1, 3)							0	0	0	0
Architecture/Engineering/Engineering Technology (4, 14, 15)							1	1		2
Biological & Physical Science (26, 40, 41)							7	8	4	19
Business (52)							12	8	2	22
Communications/Communication Technology/Fine Arts (9, 10, 50)							24	23	6	53
Education/Library Science (13, 21, 25)										
Health (51)							18	18	2	38
Humanities/Interdisciplinary (5, 16, 23, 24, 30, 38,39, 54)							5	4	7	16
Law (22)							2	2		4
Mathematics/Computer Science (11, 27)							7,6	7,6	5,1	
Military Technology/Protective Services (29, 43)							0	0		0
Personal Services/Consumer Services/Fitness (12,19, 31)							0	0		0
Psychology/Social Sciences & Services (42, 44, 45)							14	7	9	30
Trades/Production/Transportation Health (46, 47,48, 49)							0	0	0	0
							83	71	30	184

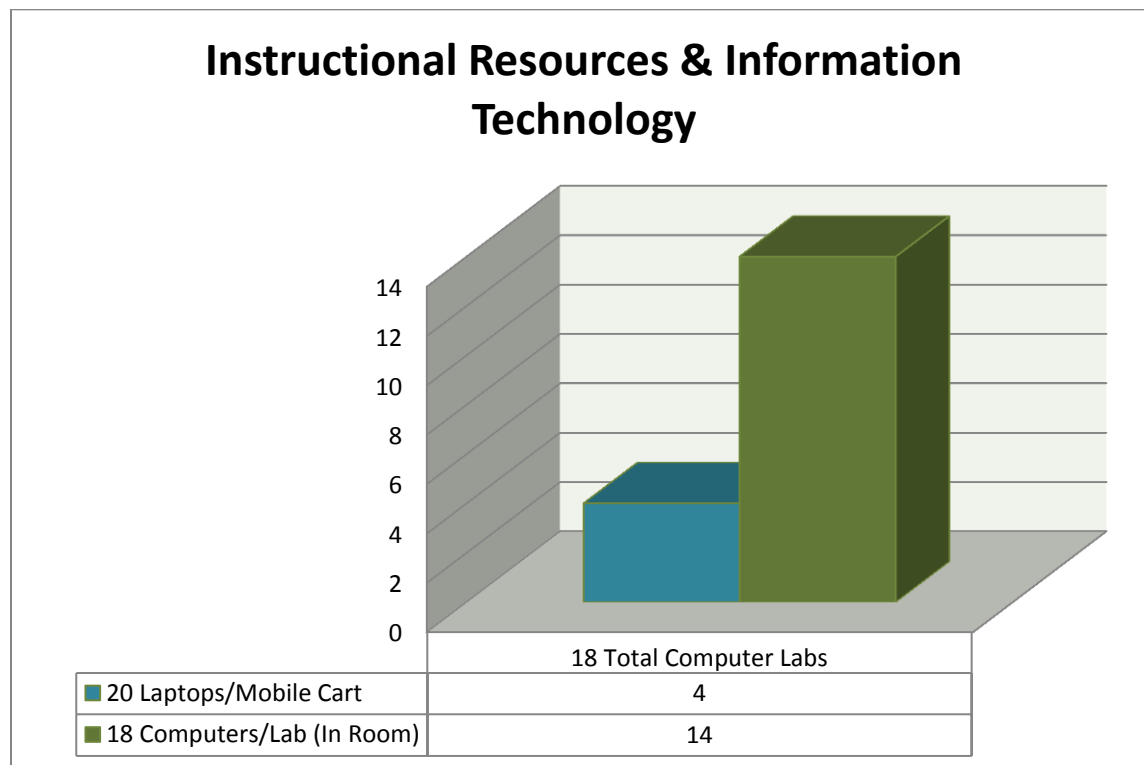
Full-Time and Part-Time Faculty by Program



Availability of Instructional Resources and Information Technology

Carl Albert State College currently has installed and configured 18 computer labs to assist student learning. The computers are installed with Windows 7 and the Microsoft Office 2010 Office suite which provides word processing, presentation, spreadsheet, and database creation software. The labs are open Monday through Friday for day and evening classes. The labs are utilized for instructor led classes as well as individual student access for homework and computer related projects. 4 of the 18 labs are mobile; 20 laptops per mobile cart are provided for any instructor to use for students in classes without computer labs.

The Telecommunication and Information Systems office does not currently monitor student access to the labs. Currently the Learning Resources labs request that students sign into use the lab computers. The day, time, and student id are entered into an Excel spreadsheet that is maintained by the LRC administrator. The Poteau and Sallisaw libraries do not log student name or IDs, only the date, time, and computer systems that were requested for use. The labs average 18 computer systems per room, including the instructor's computer. The office of Telecommunication and Information Systems supports a database of library resources that assist students in class research projects and papers. The databases provide a list of library books, articles and online resources i.e., EBSCO host, e-Library, and JSTOR to name a few.



To assist students with difficult schedules due to increased work and family obligations, CASC has adopted the Blackboard Learning Management system to provide online classes through the World Wide Web. Students can take classes from the privacy of their own home and access there CASC classes at their convenience. Our Blackboard license is currently unlimited which allows our college the flexibility to provide online content for strictly online courses, hybrid courses, or for student access to supplemental content.

Carl Albert State College currently issues a Vikeconnect portal login name and password for all CASC enrolled students. The portal is a website that allows students to check their financial aid awards and select, decline, or decrease their loan amounts. Students may add/drop classes, check billing status, grades, and degree progress. When students enroll at CASC, a student email account is automatically generated. CASC currently uses Gmail accounts for all faculty, staff, and students. Gmail provides not only a great communication tool, but with each student email account, a free Google drive account is given each student. Google drive provides the following:

	Google Drive	Picasa	Gmail
Free storage	5 GB for synced and uploaded files	1 GB for photos and videos. Files under certain sizes	10 GB for messages and attachments

Included with the Gmail and Google drive are word processing, presentation, and spreadsheet cloud applications. When students create a document within Google drive, that document can be shared with instructors or other students for group assignments and instructor evaluations.

The office of Telecommunication and Information Systems provides help desk support through our open source OS Ticket help desk system. The help-desk website allows faculty, staff, and students to submit support request through the OS Ticket website. Our office received 625 tickets to date for 2012, and we expect the number to increase over the next year.

CASC recently updated our website to provide students a comprehensive source of information for admittance, enrollment, financial aid, degree programs, and cost of attendance. The site gives students up to date information regarding financial aid disbursement dates, enrollment deadlines, schedules, and an online application for admittance. The website also provides links to the CASC Facebook account where students can find information on CASC events and even emergency notification alerts. CASC has implemented the Blackboard connect emergency notification system. Blackboard connect allows CASC to quickly notify student on any range of emergency situations on campus by sending messages directly to student email, text, and cell phones in a matter of minutes.

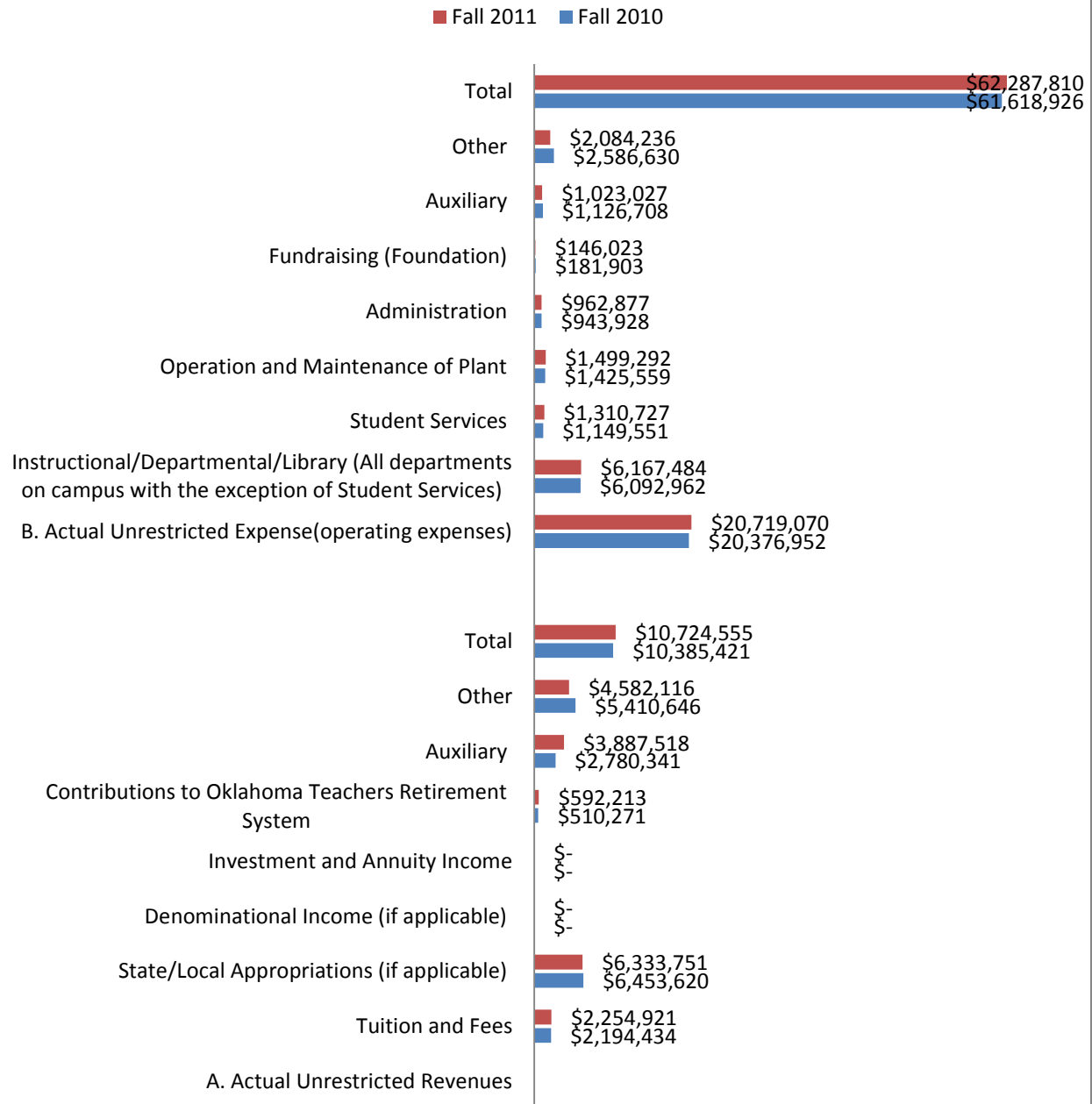
To keep pace with the increase demand for mobile web demands from smart phone and ipads CASC is in the process of implementing JICS GO. JISC GO is the mobile version of our current Vikeconnect portal. Students will have access to the same tools in JICS GO that they now enjoy in our Vikeconnect portal

Many students are bringing their own laptops and pad devices to the classroom. To provide them access to the internet to access relevant class materials CASC has provided wireless access points across the campus. We currently supply wireless internet access in every class room across both Poteau and Sallisaw campuses. We are now enlarging our wireless presence by adding more access points across each campus and hope to have the entire campuses covered within the next year.

CASC Financial Data Fall 2010/Fall 2011

<u>Actual Unrestricted Revenues</u>	<u>Fall 2010</u>	<u>Fall 2011</u>
Tuition and Fees	\$ 2,194,434	\$2,54,921
State/Local Appropriations	\$6, 453,620	\$6,333,751
Investment and Annuity Income	\$0	\$0
Contributions (To OTRS)	\$510,271	\$592,213
Auxiliary	\$2,780,341	\$3,887,518
Other	\$5,410,646	\$4,582,116
Total	\$10,385,421	\$10,724,555
<u>Actual Unrestricted Expense</u>	<u>\$20,376,952</u>	<u>\$20,719,070</u>
Instructional/Departmental/Library	\$6,092,962	\$6,167,484
Student Services	\$1,149,551	\$1,310,727
Operation and Maintenance of Plant	\$1,425,559	\$1,499,292
Administration	\$943,928	\$962,877
Fundraising	\$146,023	\$181,903
Auxiliary	\$1,126,708	\$1,023,027
Other	\$2,586,630	\$2,084,236

Financial Data



Institutional Management of Any Shortfall

Through Non-operating revenue, i.e. ARRA funds, state and federal grants.